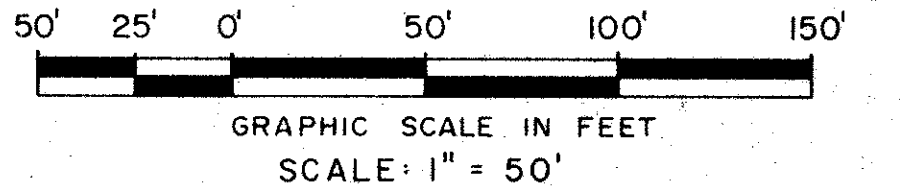
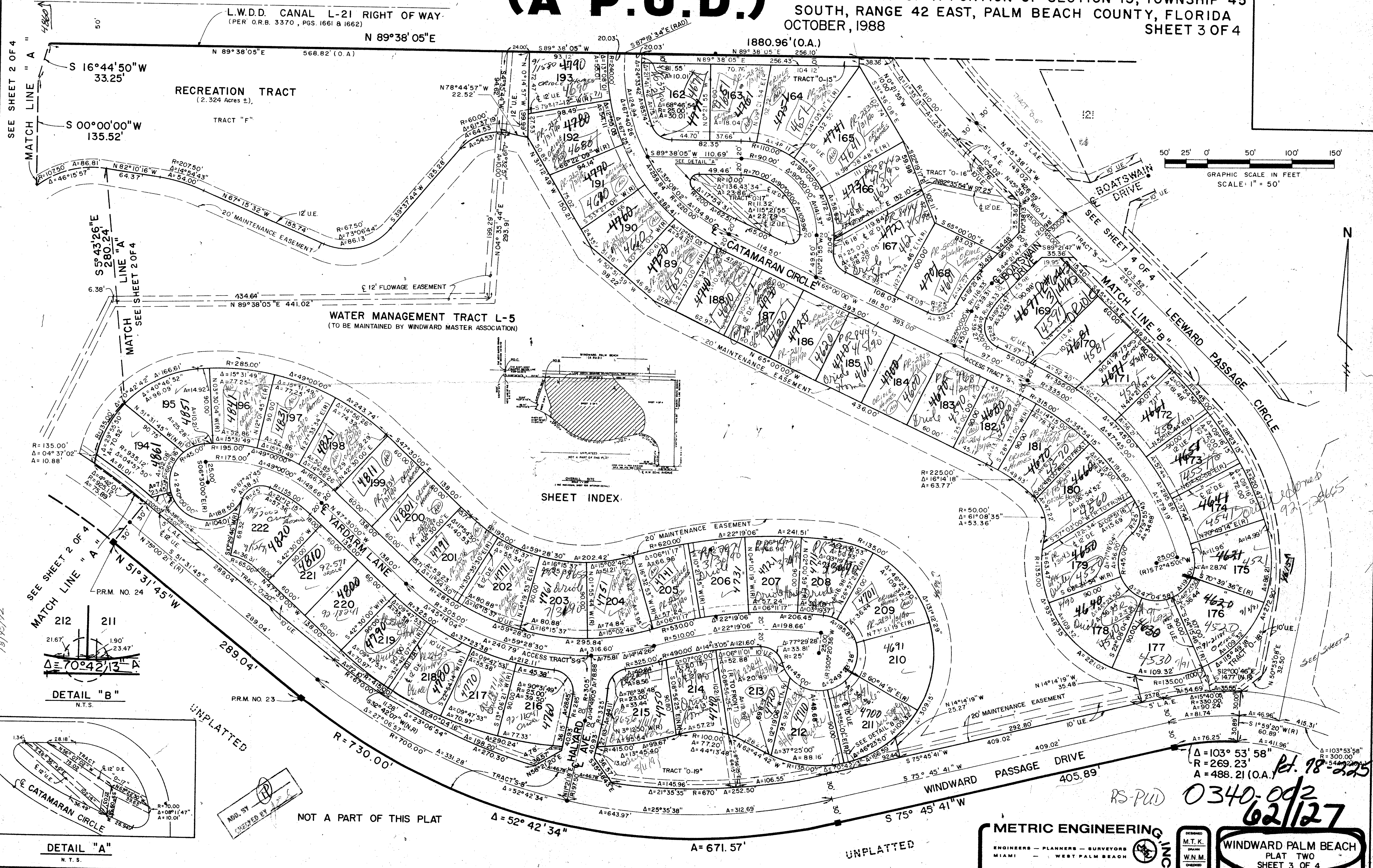


# WINDWARD PALM BEACH PLAT TWO

127

(A P.U.D.)

BEING A PLAT OF A PORTION OF SECTION 13, TOWNSHIP 45 SOUTH, RANGE 42 EAST, PALM BEACH COUNTY, FLORIDA  
OCTOBER, 1988  
SHEET 3 OF 4



SHEET INDEX

DETAIL "B"  
N.T.S.

DETAIL "A"  
N.T.S.

METRIC ENGINEERING INC.  
ENGINEERS - PLANNERS - SURVEYORS  
MIAMI - WEST PALM BEACH

WINDWARD PALM BEACH  
PLAT TWO  
SHEET 3 OF 4

DIVISION 4 Windward Palm Beach  
BOOK 62 PAGE 127  
FLOOD ZONE 190B  
ZONING 78-225 RS  
ZIRKORE 53436  
423  
13/10/12

RS-PUD 0340.092  
62/127  
Pt. 18-225

APPROVED BY  
CHECKED BY

NOT A PART OF THIS PLAT

UNPLATTED